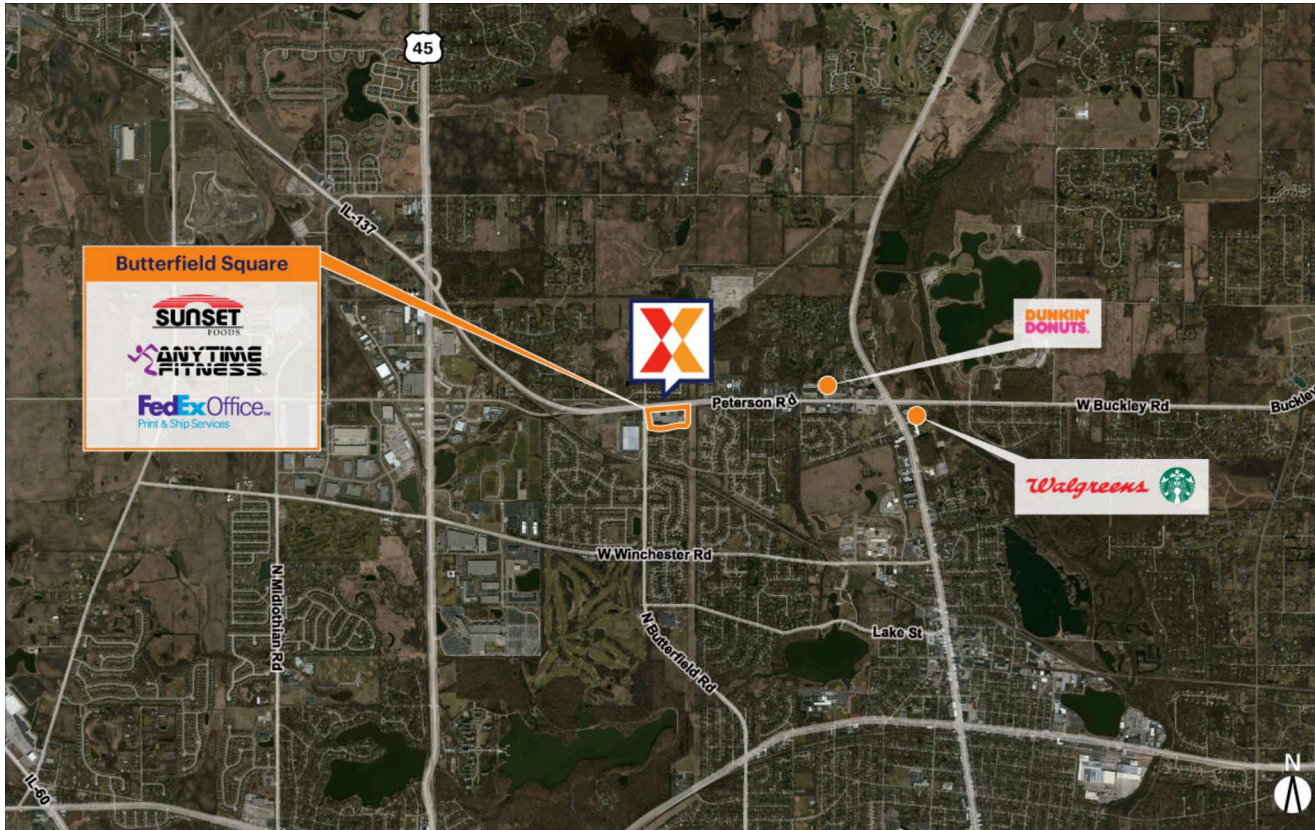




Chicago-Naperville-Elgin, IL-IN-WI

BUTTERFIELD SQUARE

42.30465, -87.9812
1451 Peterson Road | Libertyville, IL 60048-1001



CENTER SIZE: 106,683 SF



DEMOGRAPHICS	1 MILE	3 MILE	5 MILE
👤👤👤	4,495	41,525	126,472
🏠	1,433	14,911	46,497
💰	\$205,668	\$140,661	\$125,708

Market-dominant neighborhood center conveniently located to serve the affluent area of north Libertyville

Retail location anchored by family-owned grocer Sunset Foods which draws a significant loyal customer base

Surrounded by an affluent population with an average household income of \$140,000+ within a 3-mile radius

Located on the major east/west arterial Rte 137 with high visibility from 23,000+ vehicles daily

Restaurant space available for lease

Chicago-Naperville-Elgin, IL-IN-WI

BUTTERFIELD SQUARE

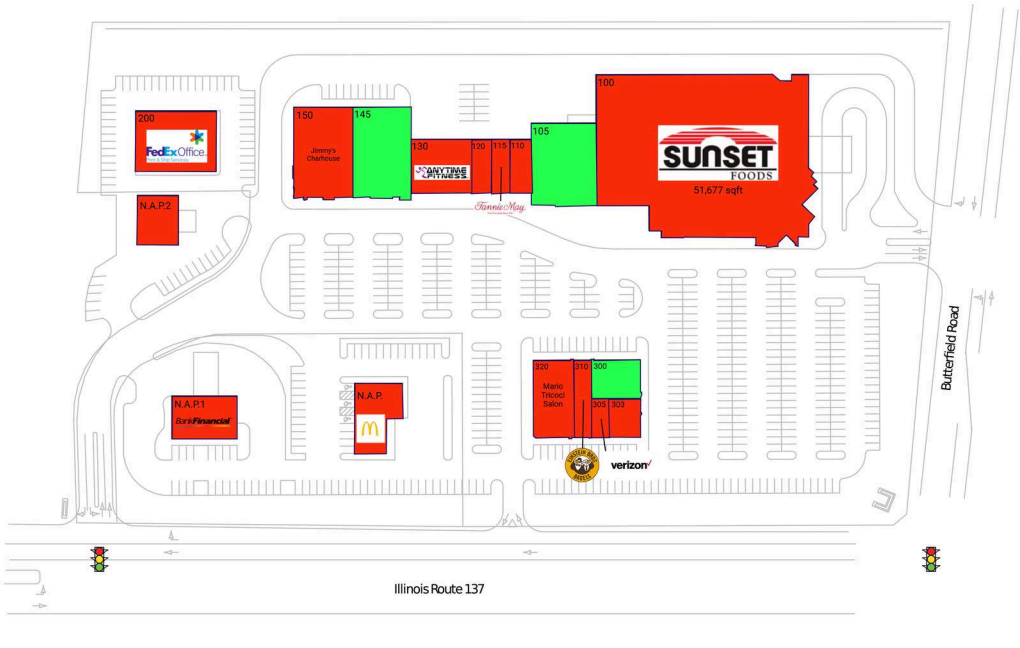
42.30465, -87.9812
1451 Peterson Road | Libertyville, IL 60048-1001

AVAILABLE SPACE

105	8,000 SF
145	8,045 SF
300	3,034 SF

CURRENT RETAILERS

N.A.P.	McDonald's	
N.A.P.1	Bankfinancial	
N.A.P.2	A.W. Zengeler Cleaners	
100	Sunset Foods	51,677 SF
110	Rosella's Boutique	1,800 SF
115	Fannie May Candies	1,527 SF
120	Ganello's Pizza Company	1,625 SF
130	Anytime Fitness	4,898 SF
150	Jimmy's Charhouse	8,240 SF
200	FedEx Office	7,500 SF
303	Pikus Eye Care	1,585 SF
305	Verizon Wireless	1,252 SF
310	Einstein Bros. Bagels	2,500 SF
320	Mario Tricoci Salon	5,000 SF



4148 - 02.13.25