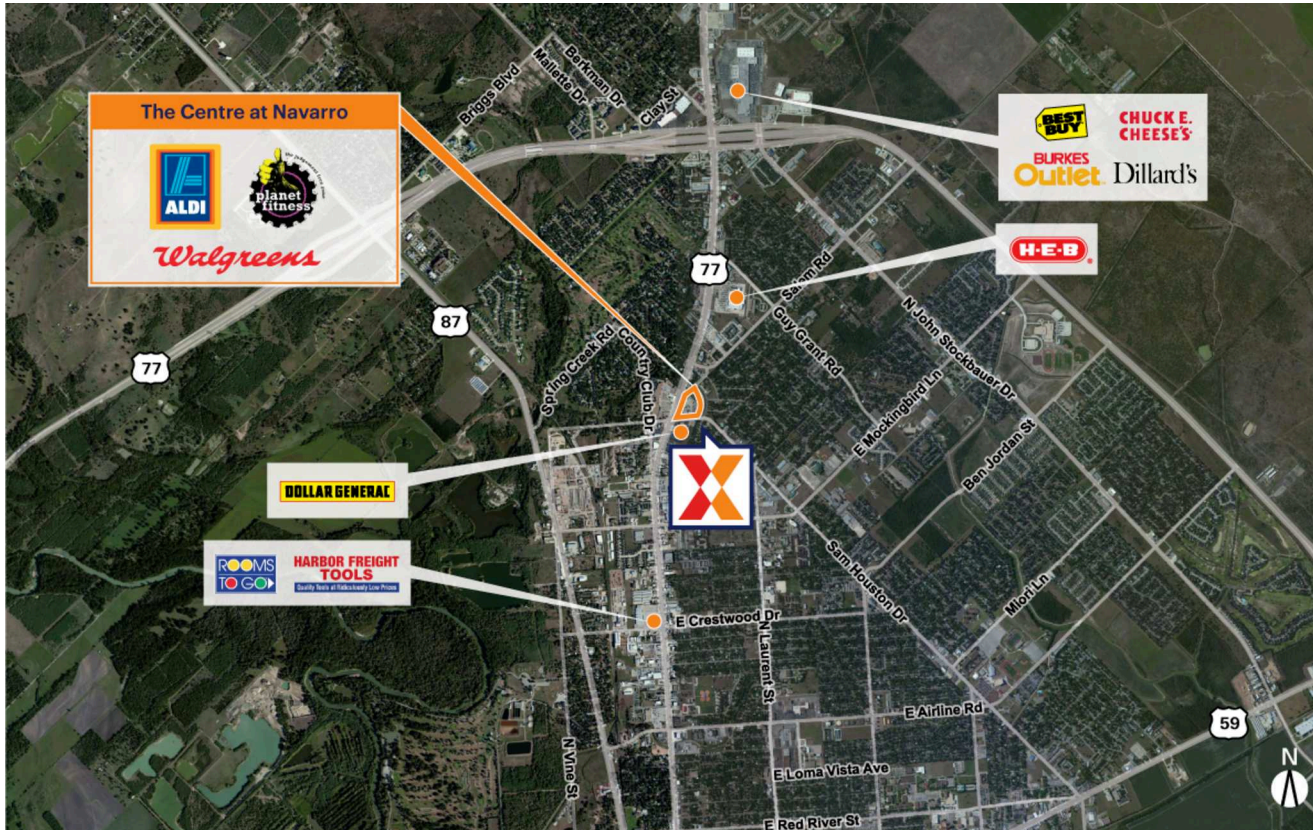




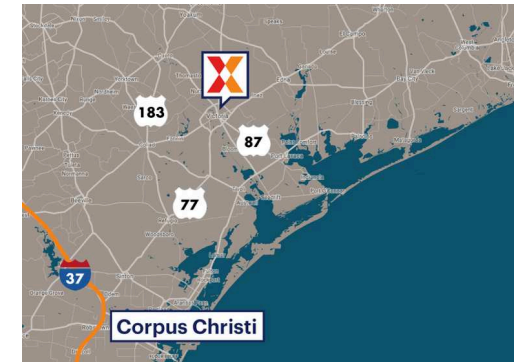
Victoria, TX

# THE CENTRE AT NAVARRO

28.843, -97.0004  
206 Stanly Street | Victoria, TX 77901



CENTER SIZE: 71,974 SF



DEMOGRAPHICS	1 MILE	3 MILE	5 MILE
	9,273	50,017	69,306
	3,722	19,445	26,060
	\$87,616	\$80,159	\$76,462

Located at the NE corner of Navarro St (Rte 77) with 33,000 VPD

1.5 miles south of the Victoria Mall, the only enclosed mall within a 100 mile radius (Anchored by Dillard's, JCPenney, Sears & Bealls)

Anchored by a newly opened ALDI and Walgreens

Surrounded by an affluent population with an average household income of \$80,000+ within 3 miles

Victoria draws shoppers from 50 miles in all directions and serves a trade area of more than 250,000 people

Victoria, TX

THE CENTRE AT NAVARRO

28.843, -97.0004  
206 Stanly Street | Victoria, TX 77901



AVAILABLE SPACE

02A	2,500 SF
10	10,033 SF

CURRENT RETAILERS

01	Walgreens	14,560 SF
02	Planet Fitness	20,000 SF
02B	Hawaii Poke	2,500 SF
03	Wingstop	3,250 SF
3	Wingstop	3,250 SF
05	Nutri Fuel Smoothies & Supplements	1,400 SF
06	Supercuts	1,400 SF
07	Rose Nail Spa	1,000 SF
08	Rose Nail Spa	2,350 SF
09	ALDI	24,014 SF

1872 - 09.19.24