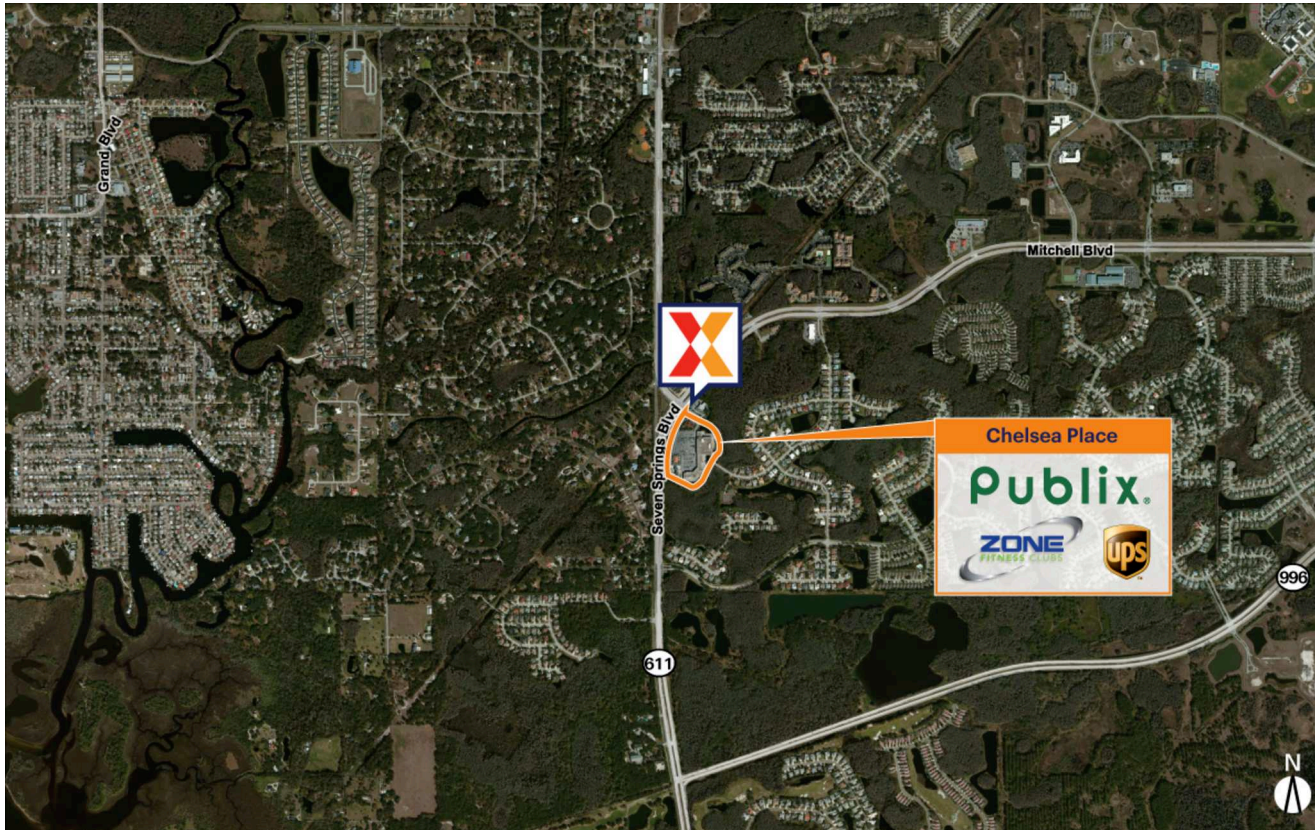


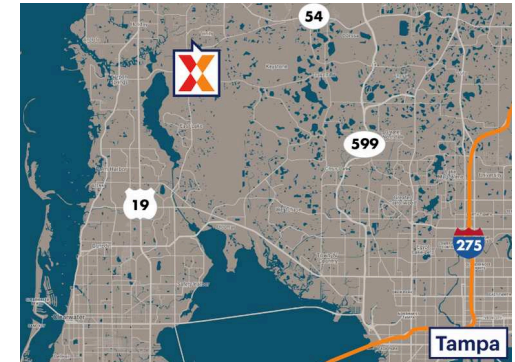


Tampa-St. Petersburg-Clearwater, FL
CHELSEA PLACE

28.1801, -82.6985
 1302-1420 Seven Springs Boulevard | New Port Richey, FL 34655



CENTER SIZE: 81,144 SF



DEMOGRAPHICS	1 MILE	3 MILE	5 MILE
👤	5,082	54,712	151,400
🏠	1,910	22,446	65,168
💰	\$91,239	\$67,242	\$67,465

Publix-anchored community center

Benefits from an expansive trade area with strong demographics

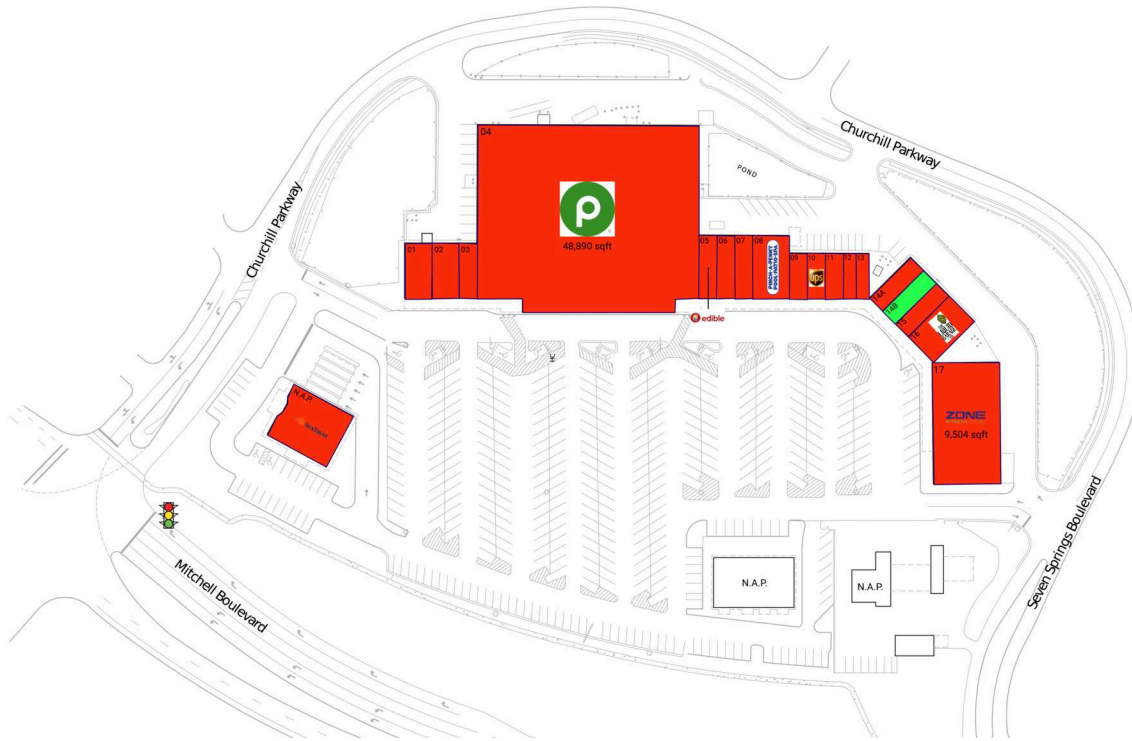
High visibility on Seven Springs Blvd from 25,000+ vehicles daily

Tampa-St. Petersburg-Clearwater, FL
CHELSEA PLACE

28.1801, -82.6985
 1302-1420 Seven Springs Boulevard | New Port Richey, FL 34655

AVAILABLE SPACE

14B 1,300 SF



CURRENT RETAILERS

N.A.P.	SunTrust Bank	
01	Green Culture	1,800 SF
02	Chelsea Place Liquors	1,800 SF
03	Hot Wok	1,200 SF
04	Publix	48,890 SF
05	Edible Arrangements	1,400 SF
06	Majik Touch Cleaners	1,400 SF
07	Turbo Nails	1,400 SF
08	Pinch-A-Penny	2,800 SF
09	9Round	1,000 SF
10	The UPS Store	1,000 SF
11	Salon Trinity	1,000 SF
12	Crosslet Insurance Services	725 SF
13	Scissors Edge Barber Shop	725 SF
14A	Picture Perfect Framing	1,300 SF
15	Andrew L. Kemp, Chiropractor	1,300 SF
16	Liquid Garage Company	2,600 SF
17	Zone Fitness Club	9,504 SF

1814 - 02.12.25